



ROYAL CANIN®

HT 42d Large Dog

LARGE DOG OVER 10 KG (11 KG - 100 KG)



BITCHES OVER 10 KG (11 KG-100 KG) FROM THE 1ST DAY OF HEAT TO THE 42ND DAY OF GESTATION AVAILABLE IN 17 KG



APPROPRIATE ENERGY LEVEL

Appropriate energy level and daily ration which meet the energy needs of reproductive bitches from the 1st day of heat to the 42nd day of gestation. It is recommended that daily ration be controlled to avoid any risk of excess weight gain which could affect the animal's health.

Reproductive health

Nutrients to support the first stage of the bitch's reproductive cycle : from heat to the 42nd day of gestation.

Digestive health

Helps support optimal digestibility thanks to an exclusive formula including very high quality protein sources (L.I.P.) and a balanced supply of dietary fibre.

Enhanced palatability

Satisfies the sometimes fussy appetite of reproductive bitches (over 10 kg) in heat or at the beginning of gestation thanks to carefully selected flavours and a customized kibble size.

INGREDIENTS

COMPOSITION: maize, dehydrated poultry protein, rice, animal fats, vegetable protein isolate*, hydrolysed animal proteins, vegetable fibres, beet pulp, fish oil, minerals, soya oil, marigold extract (source of lutein).

*L.I.P.: protein selected for its very high assimilation.

ADDITIVES (per kg): Nutritional additives : Vitamin A : 37600 IU, Vitamin D3: 1000 IU, Folic acid : 29 mg, E1 (Iron): 48 mg, E2 (Iodine): 4.8 mg, E4 (Copper): 11 mg, E5 (Manganese): 62 mg, E6 (Zinc): 187 mg, E8 (Selenium): 0.06 mg, Beta-carotene: 20 mg, L-carnitine: 50 mg - Preservatives - Antioxidants.

AVERAGE ANALYSIS

Moisture (%)	9.50
Protein (%)	26
Fat (%)	18
Linoleic acid (%)	2.92
Omega 6 (%)	3.12
Omega 3 (%)	0.85
EPA + DHA (%)	0.40
Dietary fibre (%)	8.50
Starch (%)	31.20
Ash (%)	6.80

MINERALS (Total)

Calcium (%)	1.10
Phosphorus (%)	0.80
Sodium (%)	0.40
Magnesium (%)	0.10
Chloride (%)	0.91
Potassium (%)	0.70
Zinc (mg/kg)	226
Manganese (mg/kg)	74
Iodine (mg/kg)	5.50
Selenium (mg/kg)	0.26
Iron (mg/kg)	213
Copper (mg/kg)	15

VITAMINS (Total)

Vit. A (IU/kg)	39000
Vit. D3 (IU/kg)	1000
Vit. E (mg/kg)	600
Vit. C (mg/kg)	300
Vit. B1 (thiamine) (mg/kg)	4.30
Vit. B2 (riboflavin) (mg/kg)	4
Calcium panthotenate (mg/kg)	57.60
Vit. B6 (pyridoxin) (mg/kg)	71.50
Vit. B12 (cyanocobalamin) (mg/kg)	0.07
Niacin (mg/kg)	15.60
Biotin (mg/kg)	6.88
Folic acid (mg/kg)	29
Choline (mg/kg)	2000

OTHER NUTRIENTS (Total)

Taurine (%)	0.22
L-carnitine (mg/kg)	50
Lutein (mg/kg)	5

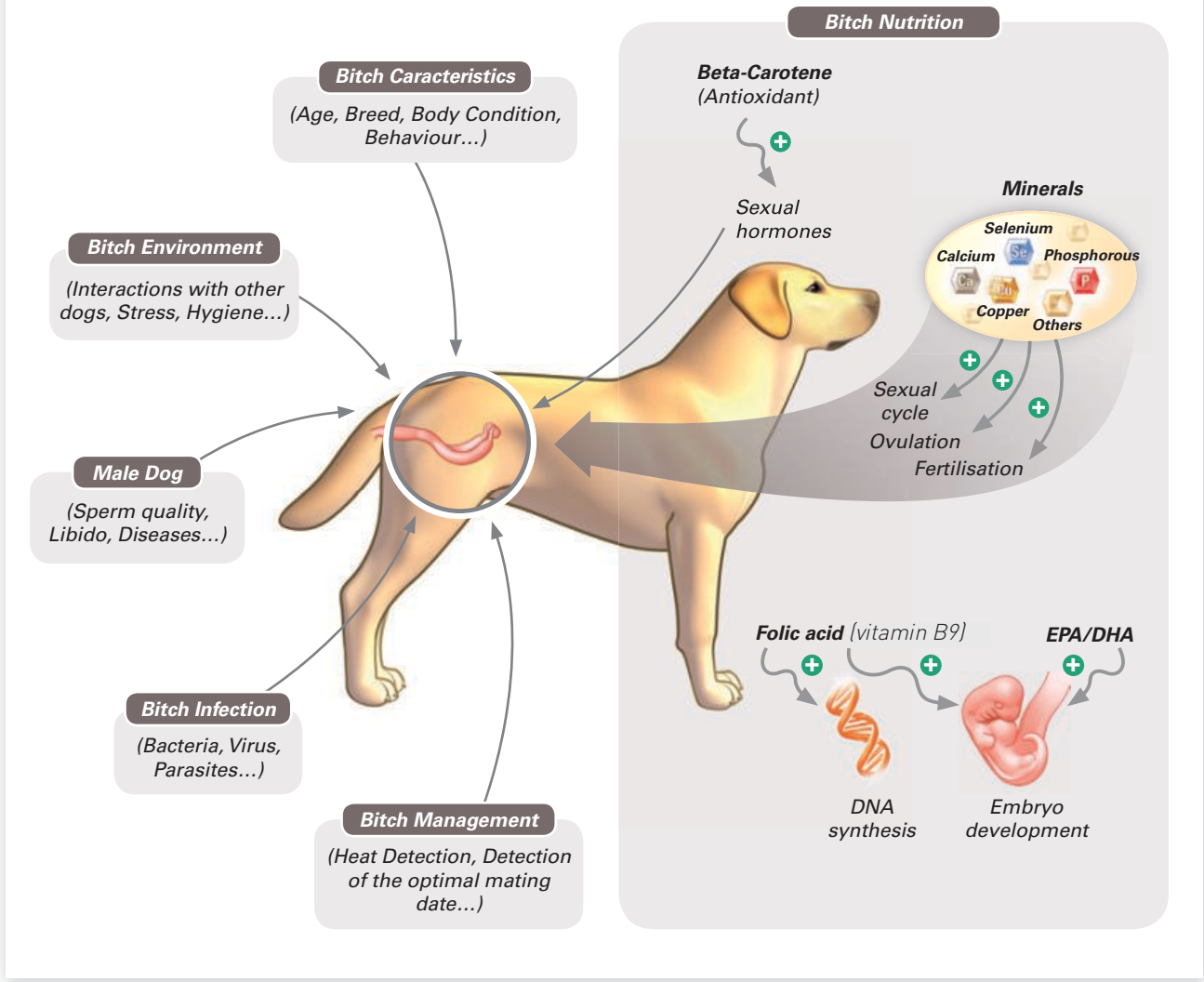
METABOLISABLE ENERGY

Metabolisable energy (NRC 85) (kcal/kg)	3721
Metabolisable energy (NRC 2006) (kcal/kg)	3874

Professional



FACTORS INFLUENCING REPRODUCTION PERFORMANCE



Professional

Dog Weight (kg)	Day 1 (g)	Day 2 (cup)	Day 3 (g)	Day 4 (cup)
11 kg	195 g	1 + 7/8	273 g	2 + 5/8
13 kg	221 g	2 + 1/8	309 g	3
15 kg	246 g	2 + 3/8	344 g	3 + 3/8
18 kg	282 g	2 + 6/8	395 g	3 + 7/8
20 kg	305 g	3	427 g	4 + 1/8
23 kg	339 g	3 + 2/8	474 g	4 + 5/8
26 kg	372 g	3 + 5/8	520 g	5
30 kg	414 g	4	579 g	5 + 5/8
36 kg	474 g	4 + 5/8	664 g	6 + 3/8
40 kg	513 g	5	718 g	7
45 kg	561 g	5 + 3/8	785 g	7 + 5/8
50 kg	607 g	5 + 7/8	849 g	8 + 2/8
55 kg	652 g	6 + 3/8	912 g	8 + 7/8
60 kg	696 g	6 + 6/8	974 g	9 + 4/8
70 kg	781 g	7 + 5/8	1 093 g	10 + 5/8
80 kg	863 g	8 + 3/8	1 208 g	11 + 6/8
90 kg	943 g	9 + 1/8	1 320 g	12 + 6/8
100 kg	1 020 g	9 + 7/8	1 428 g	13 + 7/8

cup = 240 ml (= 103 g)

IT IS RECOMMENDED THAT DAILY RATION BE CONTROLLED TO AVOID ANY RISK OF EXCESS WEIGHT GAIN WHICH COULD AFFECT THE ANIMAL'S HEALTH

© KFH • ROYAL CANIN SAS 2013 - All rights reserved - Credits : Diffimedia