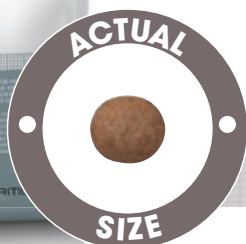
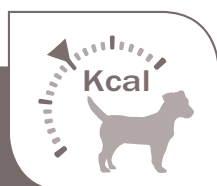


## HT 42d Small Dog

SMALL DOG UP TO 10KG (1 KG - 10 KG)



**BITCHES UP TO 10 KG (1 KG-10 KG) FROM THE 1<sup>ST</sup> DAY OF HEAT TO THE 42<sup>ND</sup> DAY OF GESTATION**  
**AVAILABLE IN 8 KG**



### APPROPRIATE ENERGY LEVEL

Appropriate energy level and daily ration which meet the energy needs of reproductive bitches from the 1st day of heat to the 42nd day of gestation. It is recommended that daily ration be controlled to avoid any risk of excess weight gain which could affect the animal's health.

#### Reproductive health

Nutrients to support the first stage of the bitch's reproductive cycle: from heat to the 42nd day of gestation.

#### Digestive health

Helps support optimal digestibility thanks to an exclusive formula including very high quality protein sources (L.I.P.) and a balanced supply of dietary fibre.

#### Enhanced palatability

Satisfies the sometimes fussy appetite of reproductive bitches (up to 10 kg) in heat or at the beginning of gestation thanks to carefully selected flavours and a customized kibble size.

### INGREDIENTS

**COMPOSITION:** dehydrated poultry protein, maize, rice, animal fats, hydrolysed animal proteins, beet pulp, vegetable protein isolate\*, minerals, fish oil, soya oil, vegetable fibres, fructo-oligo-saccharides, marigold extract (source of lutein).

\*L.I.P.: protein selected for its very high assimilation.

**ADDITIVES (per kg):** Nutritional additives : Vitamin A : 37800 IU, Vitamin D3: 1100 IU, Folic acid : 29 mg, E1 (Iron): 52 mg, E2 (Iodine): 5.2 mg, E4 (Copper): 7 mg, E5 (Manganese): 67 mg, E6 (Zinc): 201 mg, E8 (Selenium): 0.07 mg, Beta-carotene: 15 mg, L-carnitine: 50 mg - Preservatives - Antioxidants.

### AVERAGE ANALYSIS

Moisture (%)	9.50
Protein (%)	24
Fat (%)	18
Linoleic acid (%)	3
Omega 6 (%)	3.24
Omega 3 (%)	0.86
EPA + DHA (%)	0.40
Dietary fibre (%)	7.10
Starch (%)	34.90
Ash (%)	6.50

### MINERALS (Total)

Calcium (%)	1
Phosphorus (%)	0.80
Sodium (%)	0.40
Magnesium (%)	0.10
Chloride (%)	0.86
Potassium (%)	0.70
Zinc (mg/kg)	238
Manganese (mg/kg)	79
Iodine (mg/kg)	5.90
Selenium (mg/kg)	0.28
Iron (mg/kg)	232
Copper (mg/kg)	15

### VITAMINS (Total)

Vit. A (IU/kg)	39000
Vit. D3 (IU/kg)	1100
Vit. E (mg/kg)	600
Vit. C (mg/kg)	300
Vit. B1 (thiamine) (mg/kg)	4.40
Vit. B2 (riboflavin) (mg/kg)	4
Calcium panthotenate (mg/kg)	57.90
Vit. B6 (pyridoxin) (mg/kg)	71.60
Vit. B12 (cyanocobalamin) (mg/kg)	0.07
Niacin (mg/kg)	15.80
Biotin (mg/kg)	6.89
Folic acid (mg/kg)	29
Choline (mg/kg)	2000

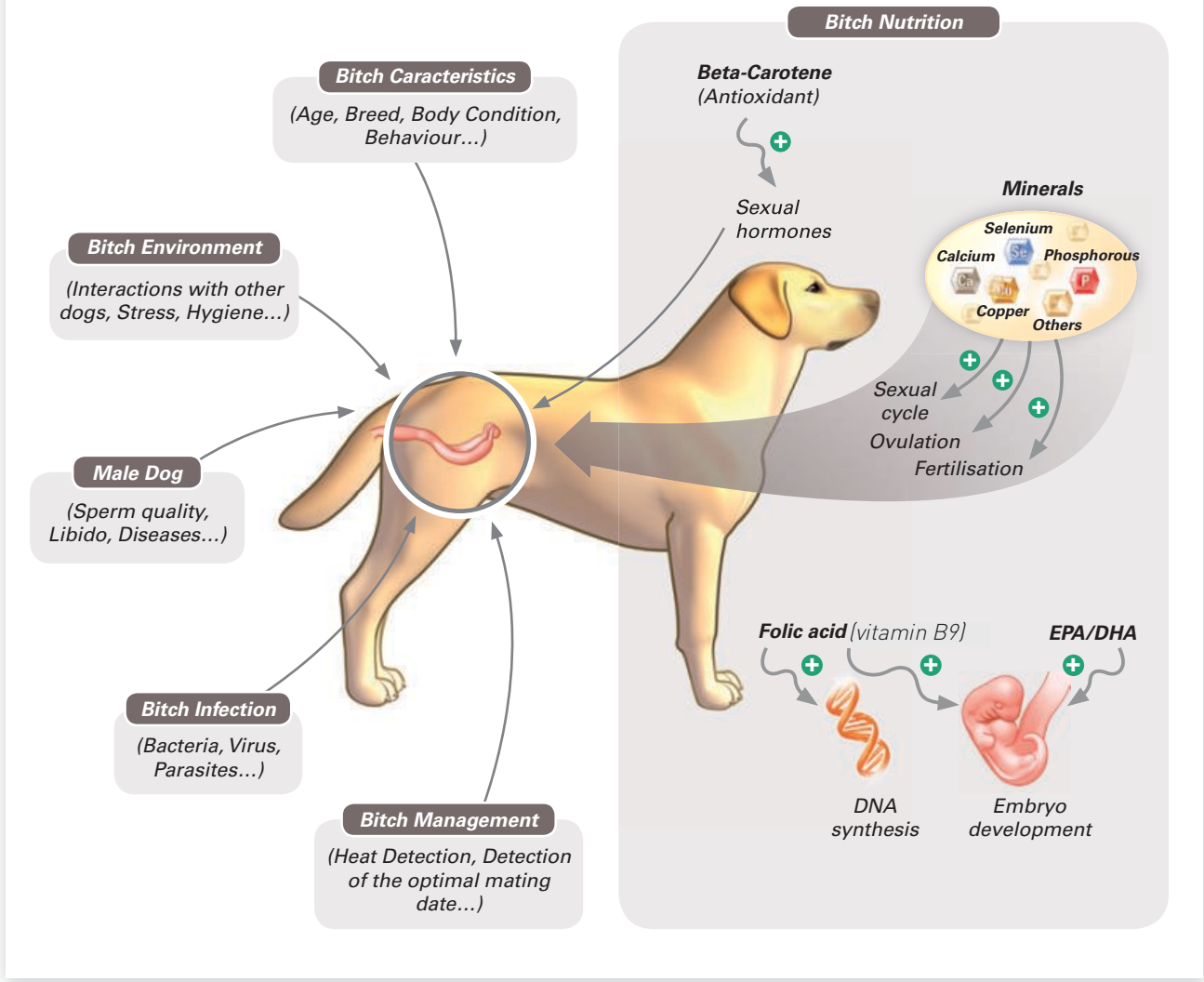
### OTHER NUTRIENTS (Total)

Taurine (%)	0.21
L-carnitine (mg/kg)	50
Lutein (mg/kg)	5

### METABOLISABLE ENERGY

Metabolisable energy (NRC 85) (kcal/kg)	3777
Metabolisable energy (NRC 2006) (kcal/kg)	3976

# FACTORS INFLUENCING REPRODUCTION PERFORMANCE



Professional

	? (g)		-24H-	
	? (g)		? (g)	
Dog Weight (kg)	(g)	cup	(g)	cup
1	31 g	2/8	44 g	3/8
2	53 g	4/8	74 g	6/8
3	72 g	6/8	100 g	1
4	89 g	7/8	124 g	1 + 2/8
5	105 g	1	147 g	1 + 3/8
6	121 g	1 + 1/8	169 g	1 + 5/8
7	135 g	1 + 2/8	189 g	1 + 7/8
8	150 g	1 + 4/8	209 g	2
9	163 g	1 + 5/8	229 g	2 + 2/8
10	177 g	1 + 6/8	248 g	2 + 3/8

1/2 1/2 + water

cup = 240 ml (=103 g)

IT IS RECOMMENDED THAT DAILY RATION BE CONTROLLED TO AVOID ANY RISK OF EXCESS WEIGHT GAIN WHICH COULD AFFECT THE ANIMAL'S HEALTH